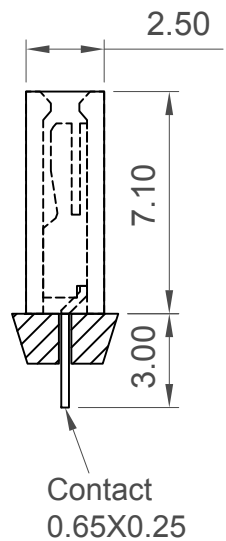
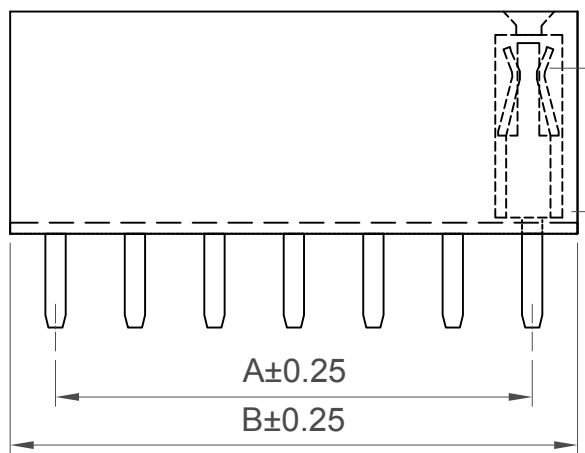


Number of Contacts	Dimensions	
	A	B
2	2.54	5.08
3	5.08	7.62
4	7.62	10.16
5	10.16	12.70
6	12.70	15.24
7	15.24	17.78
8	17.78	20.32
9	20.32	22.86
10	22.86	25.40
11	25.40	27.94
12	27.94	30.48
13	30.48	33.02
14	33.02	35.56
15	35.56	38.10
16	38.10	40.64
17	40.64	43.18
18	43.18	45.72
19	45.72	48.26
20	48.26	50.80
21	50.80	53.34
22	53.34	55.88
23	55.88	58.42
24	58.42	60.96
25	60.96	63.50
26	63.50	66.04
27	66.04	68.58
28	68.58	71.12
29	71.12	73.66
30	73.66	76.20
31	76.20	78.74
32	78.74	81.28
33	81.28	83.82
34	83.82	86.36
35	86.36	88.90
36	88.90	91.44
37	91.44	93.98
38	93.98	96.52
39	96.52	99.06
40	99.06	101.60

Minimum Insertion Depth
3.50 Ref.

Maximum Insertion Depth
6.40 ref.



Specifications

Material Insulator:
Standard: Polyamide, Nylon 6T, UL94V-0
Options: Polymer, LCP, UL94V-0
Polyester, PBT, UL94V-0
Contact: Copper Alloy

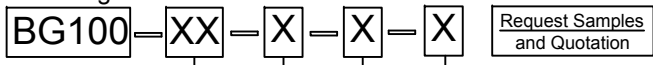
Plating
See Ordering Grid

Electrical
Current Rating: 3 Amp Per Pin
Contact Resistance: 20 mΩ max.
Insulation Resistance: 1000 MΩ min.
Dielectric Withstand Voltage: 600 V AC

Mechanical & Environmental
Operating Temperature: -40°C to +105°C
Soldering Process
Nylon 6T (Standard)
IR Reflow: 260°C for 10 sec.
Wave: 230°C for 5-10 sec.
Manual Solder: 350°C for 3-5sec
LCP (Option)
IR Reflow: 260°C for 10 sec.
Wave: 250°C for 5-10 sec
Manual Solder: 350°C for 3-5 sec
PBT (Option)
Manual Solder: 330°C for 3-5 sec.
(Not suitable for hi-temp process)

Mates with (Subject to Pin Length)
BG020 BG030 BG031 BG035
BG055 BG060 BG075 BG080

Ordering Grid



No. of Contacts
02 to 40

Packing Options

D = Tube (Standard)
E = Tube with Cap
F = Tube with Film
G = Plastic Box

Insulator Material

N = Nylon 6T (Standard)
P = PBT
L = LCP

Contact Plating

A = Gold Flash All Over (Standard)
B = Selective Gold Flash Contact Area/Tin On Tail
C = Tin All Over
G = 10µ" Gold Contact Area/Tin On Tail
I = 30µ" Gold Contact Area/Tin On Tail

Part Number		Product Description	
BG100		2.54mm Pitch Socket, Single Row, Through-Hole, Vertical, Dual Beam Folded Contacts	
Drawing Date		30th October 2006	
By	CC	Tolerances (Except as Noted)	Units:
Detail	BG100 E PCN	Length X. ± 0.30 X.X ± 0.20 X.XX ± 0.15 X.XXX ± 0.10	Metric (mm)
Revision	E3	Angle X° ± 5° X.X° ± 2° X.XX° ± 1° X.XXX° ± 0.5°	3rd Angle Projection
Date	16/11/17		



This drawing is confidential and copyright of Global Connector Technology, Ltd (GCT). This drawing must not be copied or disclosed without written consent. E & OE



Not to Scale	Drawn By LYH	Sheet No. 1/1
--------------	--------------	---------------