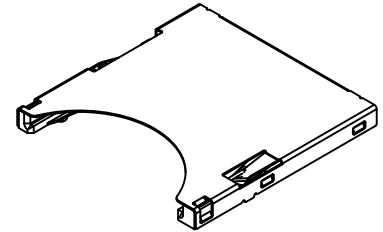
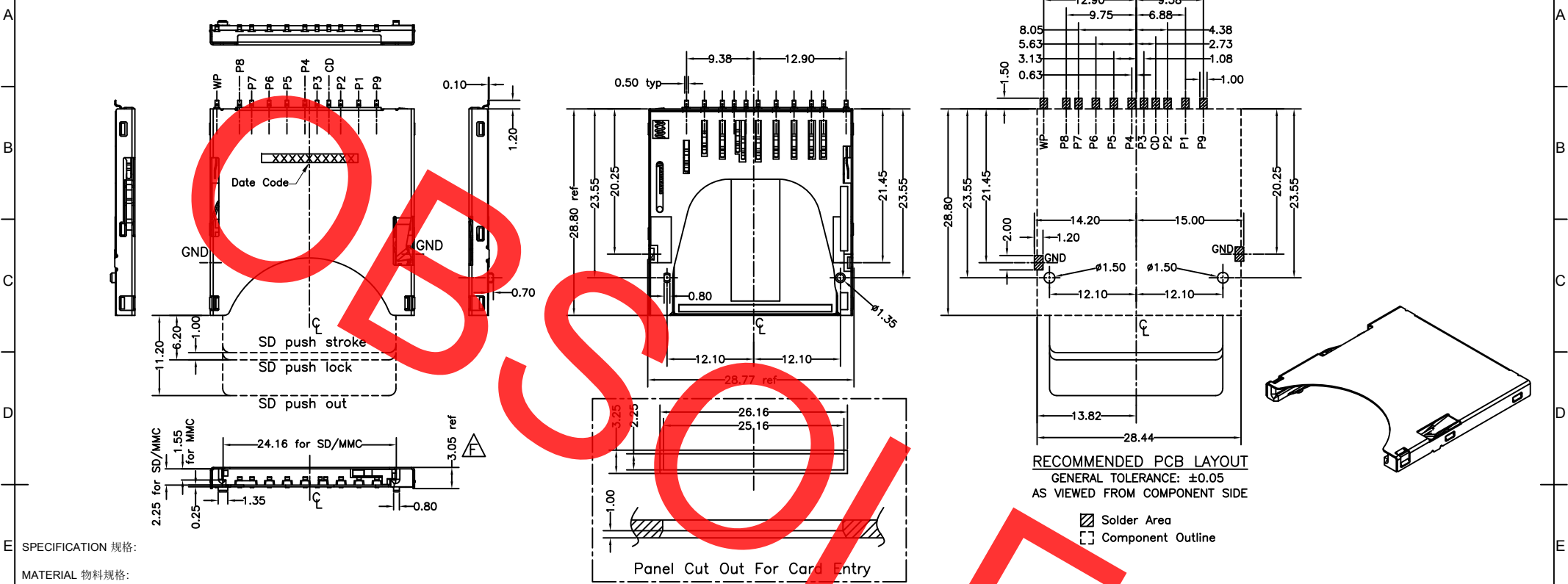


Global Connector Technology Ltd. - MEM1050: SD Memory Card Connector, Push-Push, SMT, Card Entry Normal, 3.05mm Profile, With Locating Post



RECOMMENDED PCB LAYOUT
GENERAL TOLERANCE: ±0.05
AS VIEWED FROM COMPONENT SIDE

▨ Solder Area
□ Component Outline

SPECIFICATION 规格:

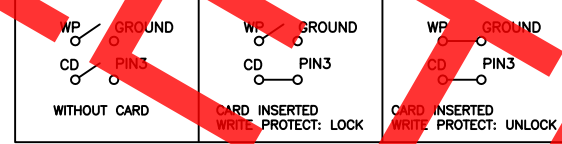
MATERIAL 物料规格:
 PLASTIC HOUSING 塑胶外壳: HIGH-TEMPERATURE
 PLASTIC UL94V-0 高温塑胶
 CONTACT TERMINAL 接触端子: PHOSPHOR BRONZE 磷青铜
 METALLIC SHELL 金属外壳: STAINLESS STEEL 不锈钢
PLATING 电镀规格:
 CONTACT TERMINAL PLATING 接触端子部分电镀:
 UNDER-PLATING 底层电镀: 80U" NICKEL OVER ALL 全部镀镍80U"
 CONTACT AREA 接触部分: GOLD FLASH 镀闪金
 SOLDERING AREA 焊接部分: 100U" TIN 镀锡100U"
 SOLDER TAIL CO-PLANARITY 焊接末端同面度: 0.1MM MAX.

ELECTRICAL 电气规格:
 VOLTAGE RATING 额定电压值: 5VDC
 CURRENT RATING 额定电流值: 10MA MAX.
 OPERATING TEMPERATURE 工作温度: -25°C TO +85°C
 CONTACT RESISTANCE 接触电阻值: 80mW MAX.
 INSULATION RESISTANCE 绝缘电阻值: 1000MW MIN. (APPLY 施加500VDC)
 DIELECTRIC WITHSTANDING VOLTAGE 耐电压:
 LEAKAGE CURRENT 漏电流 < 1mA
 (APPLY 500VAC FOR 1 MIN; 施加 500VAC共一分钟)
MECHANICAL 机械性规格:
 DURABILITY 耐久性: 5000 CYCLES 5000 次插拔
 CONTACT RETENTION FORCE 接触保持力: 300GF/PIN MIN. OR 2.94N/PIN MIN.
 CONTACT NORMAL FORCE 垂直接触力: 63GF/PIN MIN. OR 0.62N/PIN MIN.
 INSERTION FORCE 插入力: 39.2N MAX.
 EXTRACTION FORCE 拔出力: 200GF/PIN MIN. OR 1.96N/PIN MIN.

Ordering Grid
MEM1050 - **00** - **305** - **01** - **B**
 REQUEST SAMPLES AND QUOTATION

Packing Options
 B = Tray
 (Quantity per Outer Carton = 3200 pcs)
 Switch
 00 = Normally Open
 01 = With Locating Post

CARD DETECT & WRITE PROTECT DETECTION SWITCHES CIRCUIT DIAGRAM



SD CARD PIN OUT

Pin	Name	Type	Description
P1	CD/DAT3	I/O/PP	Card Detect/ Data Line[Bit3]
P2	CMD	PP	Command/Response
P3	Vss1	S	Supply voltage ground
P4	Vdd	S	Supply voltage
P5	CLK	I	Clock
P6	Vss2	S	Supply voltage ground
P7	DAT0	I/O/PP	Data Line [Bit 0]
P8	DAT1	I/O/PP	Data Line [Bit 1]
P9	DAT2	I/O/PP	Data Line [Bit 2]

By	PKN	ASE	ASE	DMR	ASE	PN	AJO
DETAIL	DRAWING RELEASE	ECN080214A	ECN080320B	ECN080429A	PROFILE HEIGHT CORRECTION	PROFILE HEIGHT CORRECTION & DUMMY CARD REMOVED	OBSOLETE
REV	A	B	C	D	E	F	X
DATE	29/11/07	14/02/08	20/03/08	29/04/08	11/05/09	11/06/09	10/04/14

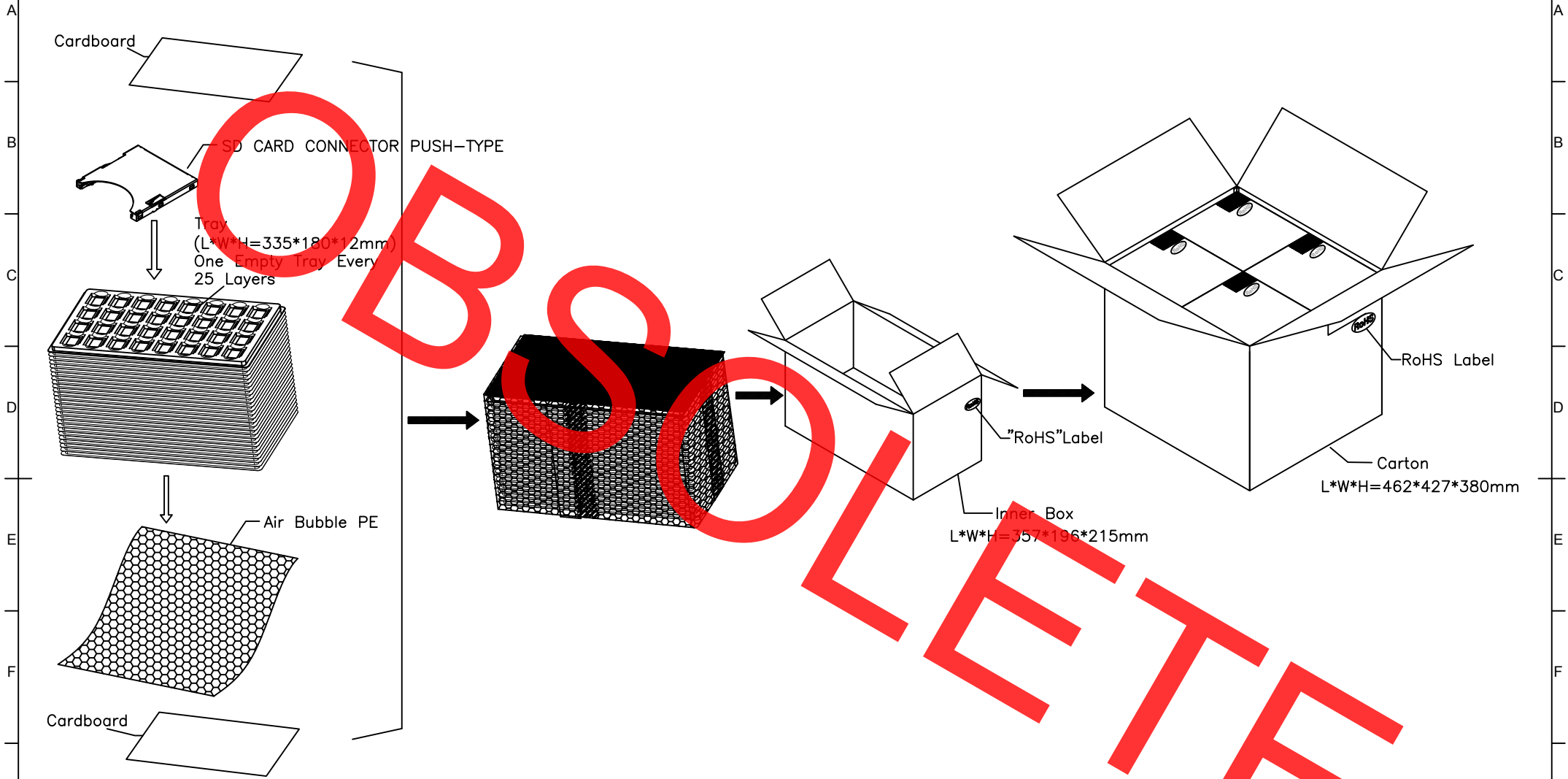


Tolerances (Except as noted)	Part Number:-	Date:-
Dimensions in mm	MEM1050	29 NOV 07
X: ± 0.38 XX ± 0.25 XXX ± 0.10	Description:-	
X." ± 2" X.X" ± 1"	SD MEMORY CARD CONNECTOR, PUSH-PUSH, SMT, CARD ENTRY NORMAL, 3.05mm PROFILE, WITH LOCATING POST	
Third Angle Projection	© THIS DRAWING IS CONFIDENTIAL AND MUST NOT BE COPIED OR DISCLOSED WITHOUT WRITTEN CONSENT	

GCT

www.globalconnectortechology.com

Scale	Revision	Material	Drawn by	Sheet No.
NTS	X	See Note	PKN	E & OE 1/2



Note注意:

1. Put 800 pcs connectors in one inner box, and 4 pcs inner boxes in one carton
800件连接器放进一内箱, 4个内箱放进一外箱
2. 3200 pcs connectors in one carton, each carton must stick RoHS label
3200件连接器放进一外箱, 每外箱需贴上RoHS标签

By	PKN	ASE	ASE	DMR	ASE	PN	AJO
DETAIL	DRAWING RELEASE	ECN080214A	ECN080320B	ECN080429A	PROFILE HEIGHT CORRECTION	PROFILE HEIGHT CORRECTION & DUMMY CARD REMOVED	OBSOLETE
REV	A	B	C	D	E	F	X
DATE	29/11/07	14/02/08	20/03/08	29/04/08	11/05/09	11/06/09	10/04/14



Tolerances (Except as noted)	Part Number:-	Date:-
Dimensions in mm	MEM1050	29 NOV 07
	Description:-	
	SD MEMORY CARD CONNECTOR, PUSH-PUSH, SMT, CARD ENTRY NORMAL, 3.05mm PROFILE, WITH LOCATING POST	
Third Angle Projection	© THIS DRAWING IS CONFIDENTIAL AND MUST NOT BE COPIED OR DISCLOSED WITHOUT WRITTEN CONSENT	

GCT www.gct.co				
Scale	Revision	Material	Drawn by	Sheet No.
NTS	X	See Note	PKN	E & OE 2/2