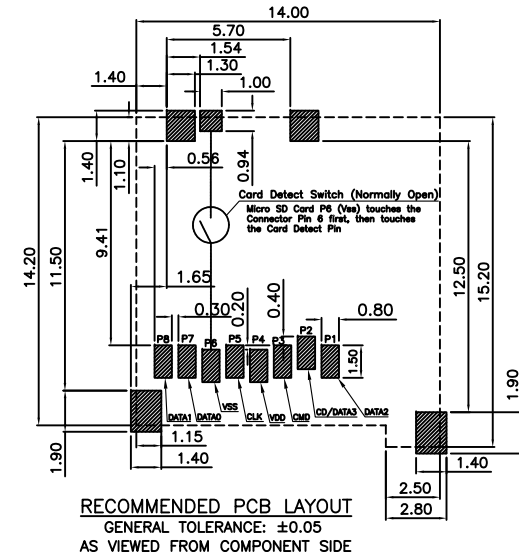
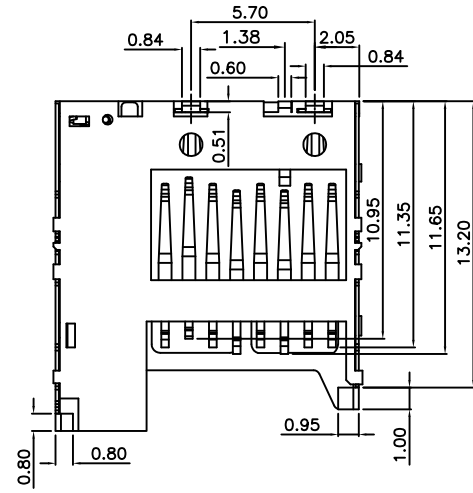
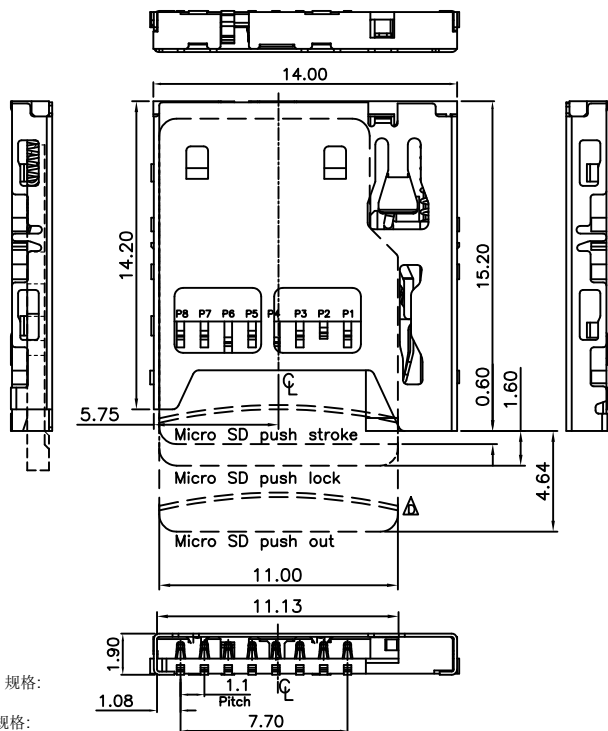


Global Connector Technology Ltd. - MEM2050: Micro SD Memory Card Connector, Push-Push, SMT, Card Entry Normal, 1.90mm Profile

A  
B  
C  
D  
E  
F  
G  
H



SPECIFICATION 规格:

MATERIAL 物料规格:

PLASTIC HOUSING 塑胶外壳:  
 BASE 底座: HIGH-TEMP. THERMOPLASTIC UL94-V0 RATED 高温塑胶  
 GUIDE 导块: HIGH-TEMP. THERMOPLASTIC UL94-V0 高温塑胶  
 CONTACT TERMINAL 接触端子: PHOSPHOR BRONZE 磷青铜  
 METALLIC SHELL 金属外壳: STAINLESS STEEL 不锈钢

PLATING 电镀规格:

CONTACT TERMINAL PLATING 接触端子部分电镀:  
 UNDER-PLATING 底层电镀: 60U" NICKEL ALL OVER 全部镀镍60U"  
 CONTACT AREA 接触部分: 15U" GOLD 镀金 15U"  
 SOLDERING AREA 焊接部分: 100U" MATTE TIN 镀雾锡100U"  
 METALLIC SHELL PLATING 金属外壳电镀:  
 UNDER-PLATING 底层电镀: 50U" NICKEL ALL OVER 全部镀镍  
 SOLDERING AREA 焊接部分: GOLD FLASH 镀闪金  
 SOLDER TAIL CO-PLANARITY 焊接末端同平面度: 0.12MM MAX.

ELECTRICAL 电气规格:

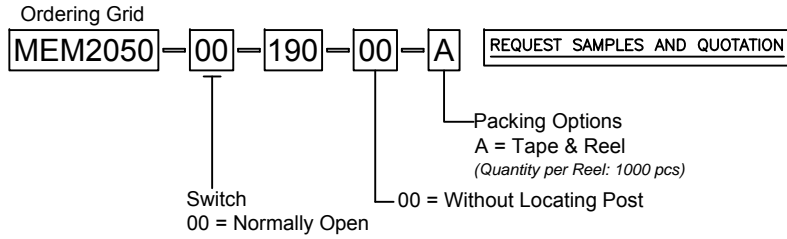
VOLTAGE RATING 电压额定值: 100 VAC (R.M.S.)  
 CURRENT RATING 电流额定值: 0.5 A MAX.  
 OPERATING TEMPERATURE 工作温度: -25°C TO +85°C  
 CONTACT RESISTANCE 接触电阻值: 100mΩ MAX.  
 INSULATION RESISTANCE 绝缘电阻值: 500MΩ MIN. (APPLY 施加500VDC)  
 DIELECTRIC WITHSTANDING VOLTAGE 耐电压: LEAKAGE CURRENT 漏电流 < 1mA (APPLY 500VAC FOR 1 MIN; 施加 500VAC共一分钟)

MECHANICAL 机械性规格:

DURABILITY 耐久性: 5000 CYCLES 5000 次插拔  
 INSERTION / EXTRACTION FORCE 插拔力: 13.8 N

By	PKN	ASE	ADS	AE	SA
DETAIL	DRAWING RELEASE	ECN070626A	ECN080808A	PUSH-PUSH CARD DETAILS RELOCATED TO 1ST SHEET	PIN 8 NAME UPDATE
REV	A	B	C	D	E
DATE	18/03/07	26/06/07	08/08/08	02/09/09	15/10/10

NOT SUITABLE FOR NEW DESIGNS, CONTACT GCT



Pin	Name	Description
P1	DAT2	Data Bit 2
P2	CD/DAT3	Card Detect/Data Bit 3
P3	CMD	Command Line
P4	V <sub>DD</sub>	Supply Voltage 2.7V/3.6V
P5	CLK	Clock
P6	V <sub>SS</sub>	Ground
P7	DAT0	Data Bit 0
P8	DAT1	Data Bit 1



Tolerances (Except as noted)	Part Number:-	Date:-
Dimensions in mm	MEM2050	14 NOV 08
X.X ±0.35 X.XX ±0.25 X.XXX ±0.150	Description:-	
X.* ±1* X.X* ±0.5* X.XX* ±0.25*	MICRO SD MEMORY CARD CONNECTOR, PUSH-PUSH, SMT, CARD ENTRY NORMAL, 1.90mm PROFILE	
Third Angle Projection	THIS DRAWING IS CONFIDENTIAL AND MUST NOT BE COPIED OR DISCLOSED WITHOUT WRITTEN CONSENT	

GCT

www.globalconnectortechology.com

Scale	Revision	Material	Drawn by	Sheet No.
NTS	E	See Note	PKN	E & OE 1/4

Global Connector Technology Ltd. - MEM2050: Micro SD Memory Card Connector, Push-Push, SMT, Card Entry Normal, 1.90mm Profile

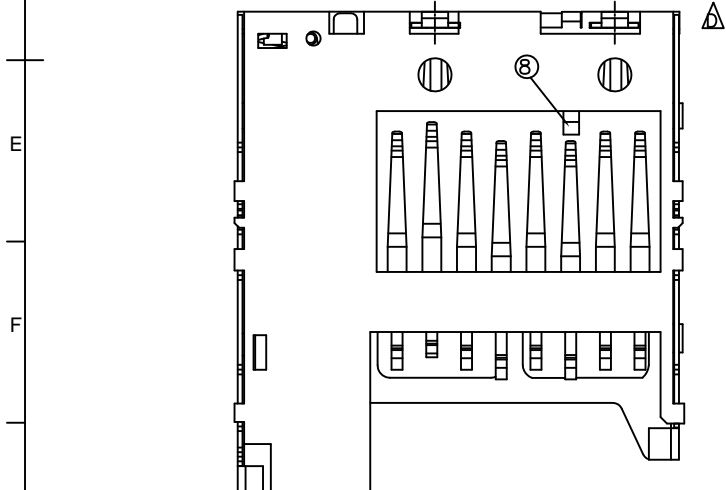
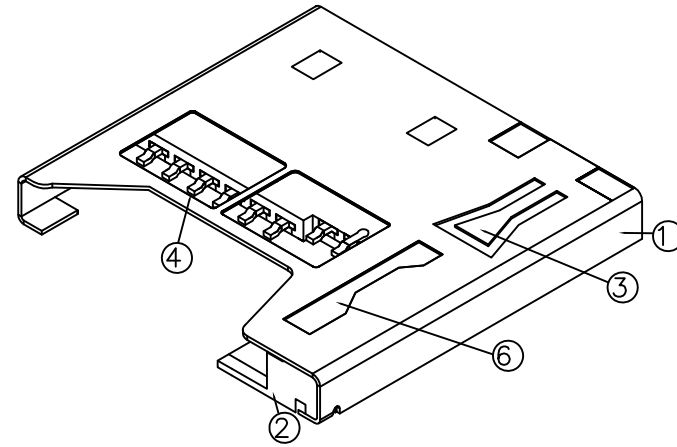
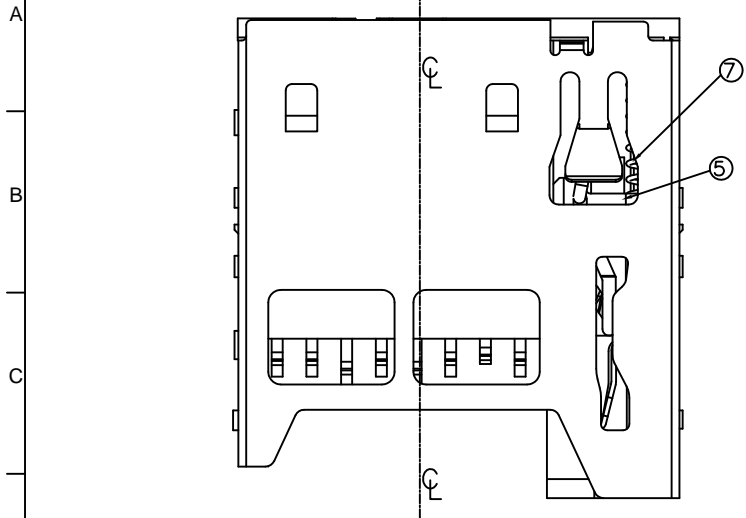


TABLE A

ITEM	DESCRIPTION	Q'TY	MATERIAL	FINISH & PLATING
1	Shell	1	Copper Alloy	Solder area Gold Flash
2	Housing	1	Thermoplastic UL94-V0	Color: Black
3	Cam Rod	1	Copper Alloy	—————
4	Data Contact	8	Copper Alloy	Gold 15u", Matte Tin 100u"
5	Slider	1	Thermoplastic UL94-V0	Color: Black
6	Retention Contact	1	Copper Alloy	—————
7	Spring	1	SWP $\phi$ 0.20	Nickel
8	Card Detect Pin	2	C2680R-H	Gold

By	PKN	ASE	ADS	AE	SA
DETAIL	DRAWING RELEASE	ECN070626A	ECN080808A	PUSH-PUSH CARD DETAILS RELOCATED TO 1ST SHEET	PIN 8 NAME UPDATE
REV DATE	A 18/03/07	B 26/06/07	C 08/08/08	D 02/09/09	E 15/10/10

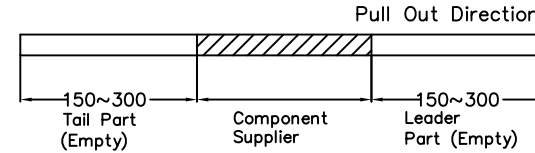
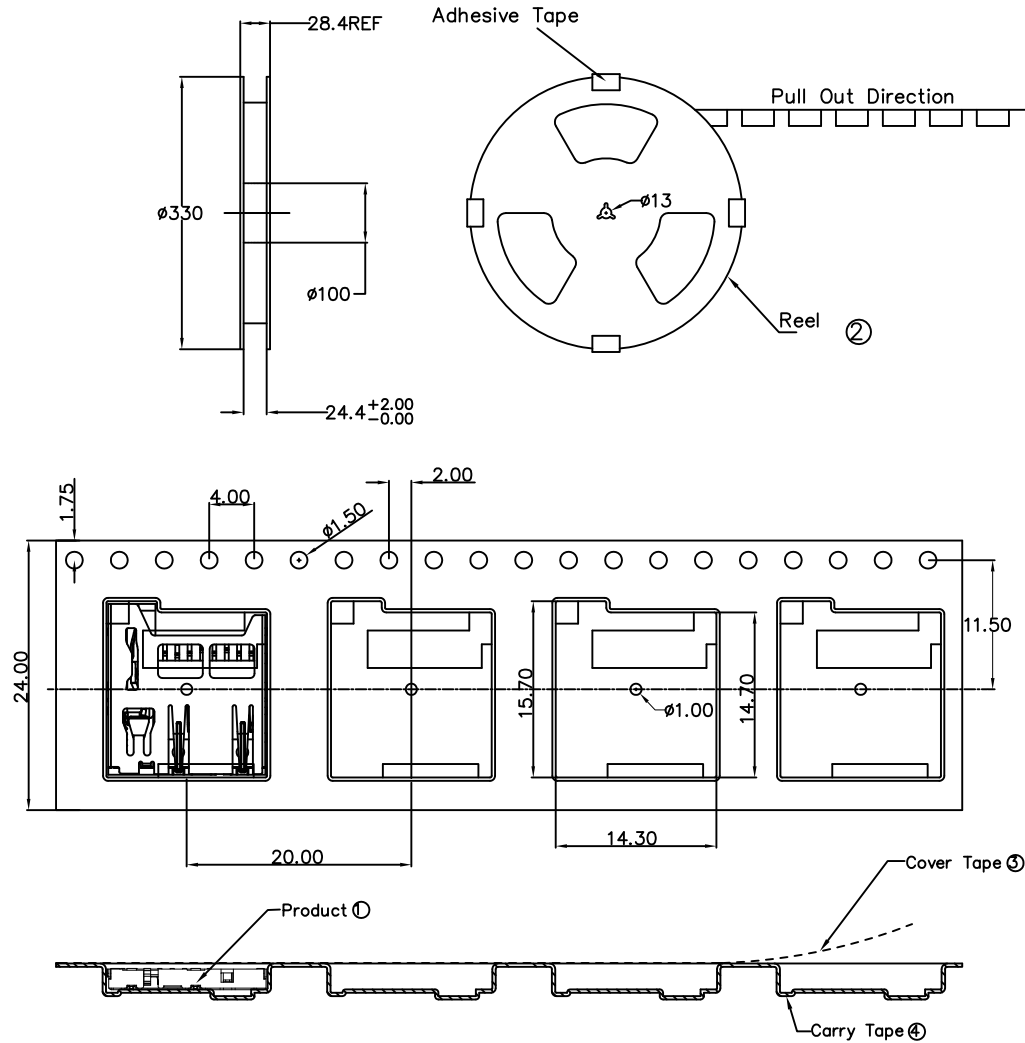


Tolerances (Except as noted)	Part Number:-	Date:-
Dimensions in mm	MEM2050	14 NOV 08
X.X $\pm$ 0.35	X. $^{\circ}$ $\pm$ 1 $^{\circ}$	Description:- MICRO SD MEMORY CARD CONNECTOR, PUSH-PUSH, SMT, CARD ENTRY NORMAL, 1.90mm PROFILE
X.XX $\pm$ 0.25	X.X $^{\circ}$ $\pm$ 0.5 $^{\circ}$	
X.XXX $\pm$ 0.150	X.XX $^{\circ}$ $\pm$ 0.25 $^{\circ}$	
Third Angle Projection	THIS DRAWING IS CONFIDENTIAL AND MUST NOT BE COPIED OR DISCLOSED WITHOUT WRITTEN CONSENT	

**GCT**

www.globalconnectortechology.com

Scale	Revision	Material	Drawn by	Sheet No.
NTS	E	See Note	PKN	2/4
			E & OE	



Notes注意:

1. Reserve 150-300mm at the leader & tail of the CARRY TAPE, not to fill any product there. CARRY TAPE 前部分与尾部分各留出 200-300mm 长度不装产品

2. Each cavity will hold 1pc. of product. Placement method is as shown in diagram. 每穴放置 1pc 产品, 放置方式如图所示

5. Firstly place 1pc. of hard card-board and 1pc. of bubble-pad at the bottom of the carton, and at the four sides, place the triangular pads, then insert the filled REEL into the center of the carton. Between the REELS, place 1pc. of bubble-pad as separator, until 5pc. of REEL are all filled. Then place 1pc of bubble-pad & 1pc. of hard card-board on top, close the carton box by plastic tape at last. 先在纸箱底部垫上 1pc 硬纸板, 后再垫上 1pc 气泡垫, 四角垫上三角垫, 然后把装好产品的 REEL 放进纸箱中, 每 REEL 之间隔 1pc 气泡垫, 依次把 5 REEL 产品放到纸箱中, 上面再垫上各 1pc 气泡垫及硬纸板, 最后用胶带封箱

4. The Packing Method is by Hot-Melting. 包装方式是热熔式

6. The peel-off force between the COVER TAPE & CARRY TAPE is: 0.1N-0.7N (variation within 0.3N). Peel-off angle: 165-175 degree; Speed of peel-off: 250mm-300mm/min. COVER TAPE 与 CARRY TAPE 剥离力: 0.1N-0.7N (跳动量在 0.3N 以内) 剥离角度: 165-175 度; 剥离速度: 250mm-300mm/分钟

Packing Materials Per Carton 每纸箱包装物料清单:

Item	Description	品名	Specification	规格	QTY	用量
①	Micro SD Push (Normal Off)	常闭	Push Type (Normal Off)	常闭	5000pcs	
②	REEL	卷筒	D= $\phi 330$ mm, d= $\phi 100$ mm, H=24.4mm		5pcs	
③	Cover Tape	封带	W=21.3mm, T=0.05mm		20300mm	
④	Carry Tape	卷带	W=24mm, P=20, T=0.3mm		20300mm	
⑤	Hard Cardboard	硬纸板	330mm*330mm*3mm		2pcs	
⑥	Bubble-Pad	气泡垫	42.5*70		6pcs	
⑦	Label	标签	120mm*85mm*155mm (T=3mm)		6pcs	
⑧	Triangular Pad	三角垫	120mm*85mm*155mm (T=3mm)		4pcs	
⑨	Carton	纸箱	350mm*350mm*177mm		1pcs	

By	PKN	ASE	ADS	AE	SA
DETAIL	DRAWING RELEASE	ECN070626A	ECN080808A	PUSH-PUSH CARD DETAILS RELOCATED TO TEST SHEET	PIN 8 NAME UPDATE
REV DATE	A 18/03/07	B 26/06/07	C 08/08/08	D 02/09/09	E 15/10/10

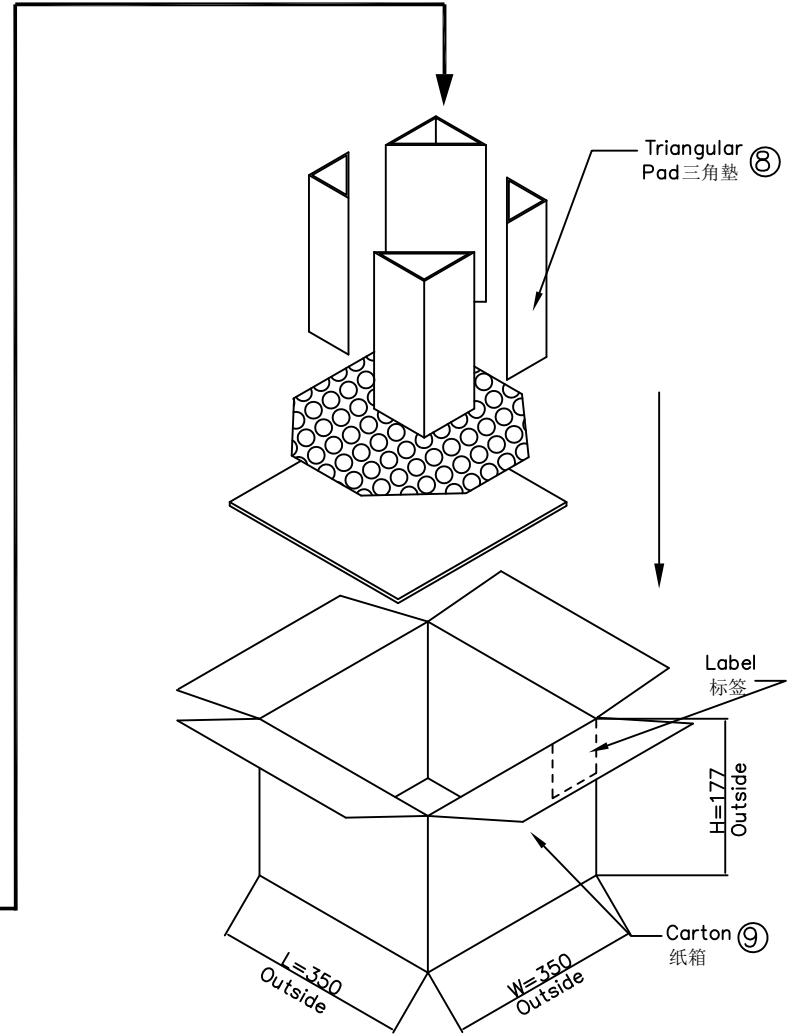
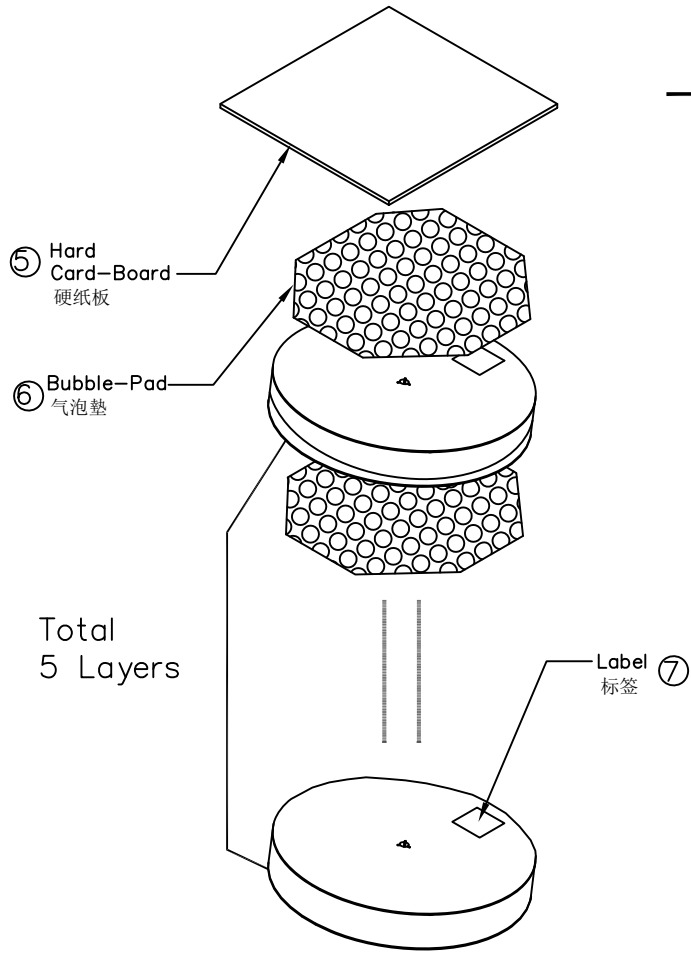


Tolerances (Except as noted)	Part Number:- MEM2050	Date:- 14 NOV 08
Dimensions in mm	Description:- MICRO SD MEMORY CARD CONNECTOR, PUSH-PUSH, SMT, CARD ENTRY NORMAL, 1.90mm PROFILE	
Third Angle Projection	THIS DRAWING IS CONFIDENTIAL AND MUST NOT BE COPIED OR DISCLOSED WITHOUT WRITTEN CONSENT	

GCT

www.globalconnectortechology.com

Scale NTS	Revision E	Material See Note	Drawn by PKN	Sheet No. 3/4
-----------	------------	-------------------	--------------	---------------



Notes 注意:

- 1.Primary Packing: 1K pcs/REEL 第一重包装: 1000件 / 卷筒
- 2.Secondary Packing: 5 REEL / CARTON (5K PCS/CARTON) 第二重包装: 5个卷筒 / 纸箱 (即5000件 / 纸箱)
- 3.Net Weight: 0.44g/pcs 每件净重: 0.44g
- 4.Gross Weight: 0.88Kg/REEL, 5.4Kg/Carton 每卷筒毛重: 0.88Kg, 每纸箱毛重: 5.4Kg

By	PKN	ASE	ADS	AE	SA
DETAIL	DRAWING RELEASE	ECN070626A	ECN080808A	PUSH-PUSH CARD DETAILS RELOCATED TO 1ST SHEET	PIN 8 NAME UPDATE
REV DATE	A 18/03/07	B 26/06/07	C 08/08/08	D 02/09/09	E 15/10/10



Tolerances (Except as noted)	Part Number:- MEM2050	Date:- 14 NOV 08
Dimensions in mm	Description:- MICRO SD MEMORY CARD CONNECTOR, PUSH-PUSH, SMT, CARD ENTRY NORMAL, 1.90mm PROFILE	
Third Angle Projection	© THIS DRAWING IS CONFIDENTIAL AND MUST NOT BE COPIED OR DISCLOSED WITHOUT WRITTEN CONSENT	

<b>GCT</b>					www.globalconnectortechology.com	
Scale NTS	Revision E	Material See Note	Drawn by PKN	E & OE	Sheet No. 4/4	