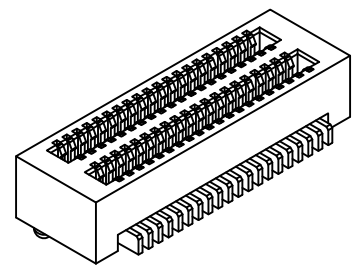
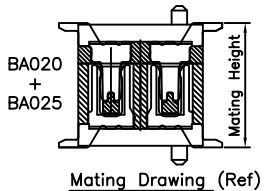
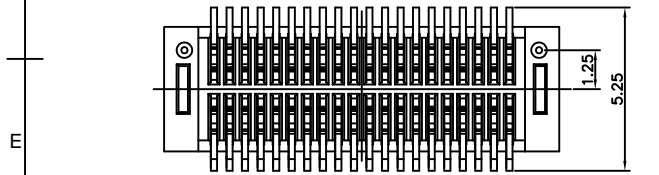
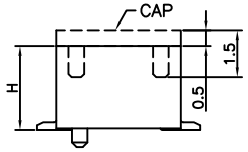
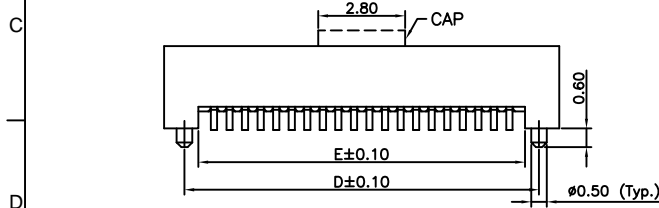
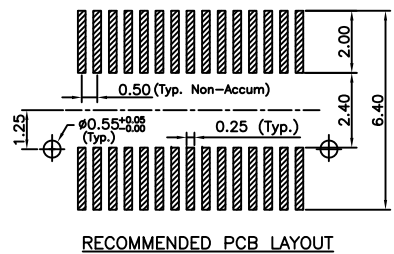
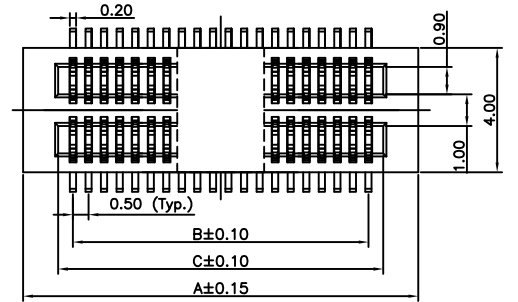


A
B
C
D
E
F
G
H



CONTACTS	DIMENSIONS				
	A	B	C	D	E
10	5.20	2.00	2.95	3.90	3.00
12	5.70	2.50	3.45	4.40	3.50
14	6.20	3.00	3.95	4.90	4.00
16	6.70	3.50	4.45	5.40	4.50
18	7.20	4.00	4.95	5.90	5.00
20	7.70	4.50	5.45	6.40	5.50
22	8.20	5.00	5.95	6.90	6.00
24	8.70	5.50	6.45	7.40	6.50
26	9.20	6.00	6.95	7.90	7.00
28	9.70	6.50	7.45	8.40	7.50
30	10.20	7.00	7.95	8.90	8.00
32	10.70	7.50	8.45	9.40	8.50
34	11.20	8.00	8.95	9.90	9.00
36	11.70	8.50	9.45	10.40	9.50
38	12.20	9.00	9.95	10.90	10.00
40	12.70	9.50	10.45	11.40	10.50
42	13.20	10.00	10.95	11.90	11.00
44	13.70	10.50	11.45	12.40	11.50
46	14.20	11.00	11.95	12.90	12.00
48	14.70	11.50	12.45	13.40	12.50
50	15.20	12.00	12.95	13.90	13.00
60	17.70	14.50	15.45	16.40	15.50
80	22.70	19.50	20.45	21.40	20.50
90	25.20	22.00	22.95	23.90	23.00
100	27.70	24.50	25.45	26.40	25.50
120	32.70	29.50	30.45	31.40	30.50

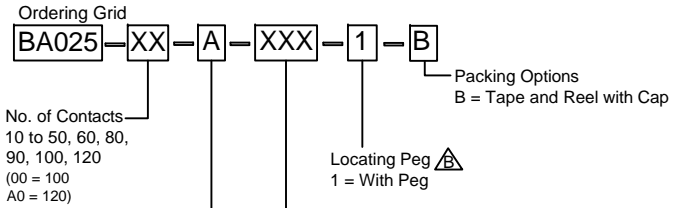
All Parts are Tooled

PART NO. (INSULATOR HEIGHT 'H')	AVAILABLE PIN NUMBERS
BA025-XX-A-220-1-B ('H' = 2.20mm)	10, 12, 20, 24, 30, 32, 40, 50, 90, 100, 120
BA025-XX-A-270-1-B ('H' = 2.70mm)	10, 12, 20, 24, 30, 32, 40, 50, 90, 100, 120
BA025-XX-A-300-1-B ('H' = 3.00mm)	10, 12, 20, 24, 30, 32, 38, 40, 50, 60, 80, 100, 120
BA025-XX-A-320-1-B ('H' = 3.20mm)	10, 12, 20, 24, 30, 32, 40, 50, 60, 80, 90, 100, 120
BA025-XX-A-350-1-B ('H' = 3.50mm)	10, 12, 20, 24, 30, 32, 38, 40, 50, 60, 80, 100, 120

Mating Height	Mating Plug (Plug Height 'H')	Mating Socket (Socket Height 'H')
3.00mm	BA025-XX-A-220-1-B ('H' = 2.20mm)	BA020-XX-A-240-1-B ('H' = 2.40mm)
3.50mm	BA025-XX-A-220-1-B ('H' = 2.20mm)	BA020-XX-A-290-1-B ('H' = 2.90mm)
4.00mm	BA025-XX-A-270-1-B ('H' = 2.70mm)	BA020-XX-A-290-1-B ('H' = 2.90mm)
4.50mm	BA025-XX-A-320-1-B ('H' = 3.20mm)	BA020-XX-A-290-1-B ('H' = 2.90mm)
5.00mm	BA025-XX-A-300-1-B ('H' = 3.00mm)	BA020-XX-A-390-1-B ('H' = 3.90mm)
5.50mm	BA025-XX-A-300-1-B ('H' = 3.00mm)	BA020-XX-A-440-1-B ('H' = 4.40mm)
6.00mm	BA025-XX-A-350-1-B ('H' = 3.50mm)	BA020-XX-A-440-1-B ('H' = 4.40mm)

SPECIFICATIONS 规格:

CURRENT RATING 电流额定值: 0.5 AMP AC/DC
 VOLTAGE RATING 电压额定值: 50V AC/DC
 INSULATOR RESISTANCE 绝缘电阻值: 100 MΩ MIN. (100V DC)
 DIELECTRIC WITHSTANDING 耐电压: AC 100 V (1 MIN.)
 CONTACT RESISTANCE 接触电阻值: 30mΩ Max.
 OPERATING TEMPERATURE 工作温度: -20°C TO +105°C
 CONTACT MATERIAL 端子物料: PHOSPHOR BRONZE
 PLATING 电镀: GOLD FLASH OVER 30 - 50u" NICKEL 底层30 - 50u"镍, 其上镀金箱
 INSULATOR MATERIAL 绝缘体物料:
 POLYAMIDE 聚酰胺, NYLON 46, UL 94-V0 HI-TEMP PLASTIC, WHITE
 SOLDERING PROCESS 可焊性: 260°C FOR 5 - 10 SECONDS
 DURABILITY 耐久力: 500 MATING CYCLES MIN. 插拔最少500次



REQUEST SAMPLES AND QUOTATION

MATES WITH 配套之公头: BA020

By	PN	ASE	SA
DETAIL	DRAWING RELEASE	PEG OPTION REMOVED	TOOLED CONTACTS UPDATED
REV DATE	A 30/04/08	B 12/01/10	C 11/08/10

Tolerances (Except as noted)

Dimensions in mm

X ± 0.30	X°±5°
XX ± 0.20	XX°±2°
XXX ± 0.15	XXX°±1°
X.XXX ± 0.10	XXX°±0.5°

Third Angle Projection

Part Number:-

BA025

Date:-

30 APR 08

Description:-

0.5mm PITCH BOARD TO BOARD SOCKET, DUAL ROW, SURFACE MOUNT, VERTICAL

THIS DRAWING IS CONFIDENTIAL AND MUST NOT BE COPIED OR DISCLOSED WITHOUT WRITTEN CONSENT

GCT

www.globalconnectortechology.com

Scale	Revision	Material	Drawn by
NTS	C	See Note	PN

Sheet No.	1/1
-----------	-----