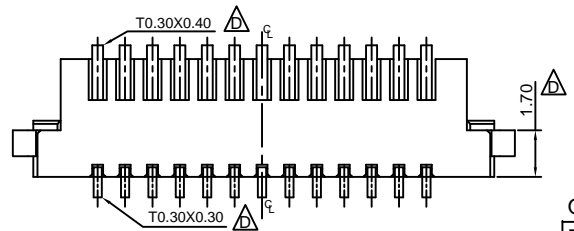
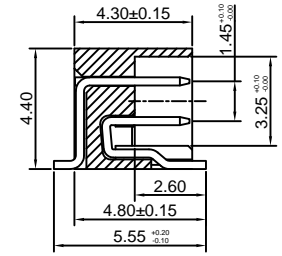
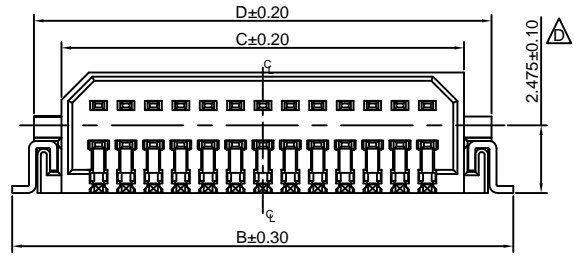
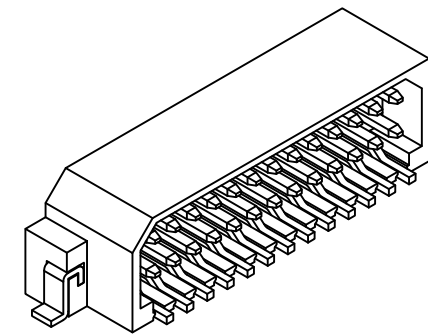
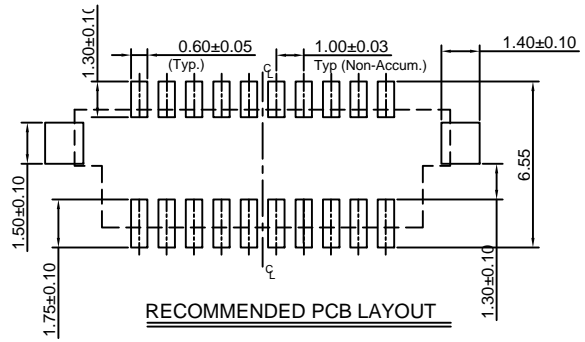
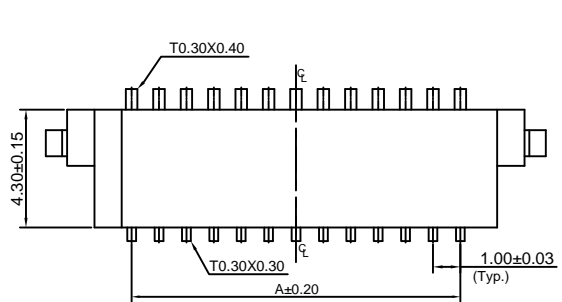


Global Connector Technology Ltd. - BC060: 1.00mm PITCH HEADER, DUAL ROW, SURFACE MOUNT, HORIZONTAL



Ordering Grid

**BC060** - **XX** - **X** - **L** - **X**

No. of Contacts: 10 to 30

Contact Plating: A = Gold Flash All Over, C = Tin All Over, **Standard = Gold Flash All Over**

Packing Options: **A = Tape and Reel (Standard)**, D = Tube

Insulator Material: **L = N6T (Standard)**

**REQUEST SAMPLES AND QUOTATION**

CONTACTS	DIMENSIONS			
	A	B	C	D
10	4.00	10.25	6.70	8.70
12	5.00	11.25	7.70	9.70
14	6.00	12.25	8.70	10.70
16	7.00	13.25	9.70	11.70
18	8.00	14.25	10.70	12.70
20	9.00	15.25	11.70	13.70
22	10.00	16.25	12.70	14.70
24	11.00	17.25	13.70	15.70
26	12.00	18.25	14.70	16.70
28	13.00	19.25	15.70	17.70
30	14.00	20.25	16.70	18.70

**SPECIFICATIONS 规格:**

CURRENT RATING 电流额定值: 1 AMP  
 INSULATOR RESISTANCE 绝缘电阻值: 1000 MEGOHMS MIN.  
 DIELECTRIC WITHSTANDING 耐电压: AC 300 V  
 CONTACT RESISTANCE 接触电阻值: 20mΩ Max.  
 OPERATING TEMPERATURE 工作温度: -40°C TO +105°C  
 CONTACT MATERIAL 端子物料: COPPER ALLOY  
 INSULATOR MATERIAL 绝缘体物料:  
 STANDARD 标准物料: POLYESTER 聚酯, N6T, UL 94-V0  
 SOLDERING PROCESS 可焊性:  
 LCP (STANDARD 标准物料) -  
 IR REFLOW 回流焊: 260°C for 10 sec.   
 WAVE 波峰焊: 250°C for 5-10 sec  
 MANUAL SOLDER 人工焊接: 350°C for 3-5 sec

MATES WITH 配套之母座 (SUBJECT TO PIN LENGTH 在端子长度适合的条件下):  
 BC061

By	ASE	GG	SA	SA	CM
DETAIL	DRAWING RELEASE	CHANGE TO SOLDER TEMP. INFORMATION	AMENDMENT TO PLATING OPTIONS	DIMENSION UPDATES	MATERIAL UPDATES
REV DATE	A 20/05/08	B 23/07/09	C 21/12/09	D 02/03/10	E 20/09/11



Tolerances (Except as noted)	Part Number:-	Date:-
Dimensions in mm	BC060	20 MAY 08
X. ± 0.30 X.X ± 0.25 X.XX ± 0.15 X.XXX ± 0.10	Description:-	
X.° ± 5° X' ± 3° XX' ± 2° .XXX' ± 1°	1.0mm PITCH HEADER, DUAL ROW, SURFACE MOUNT, HORIZONTAL	
Third Angle Projection	© THIS DRAWING IS CONFIDENTIAL AND MUST NOT BE COPIED OR DISCLOSED WITHOUT WRITTEN CONSENT	

**GCT**

www.globalconnectortechnology.com

Scale	Revision	Material	Drawn by	E & OE	Sheet No.
NTS	E	See Note	ASE	E & OE	1/1