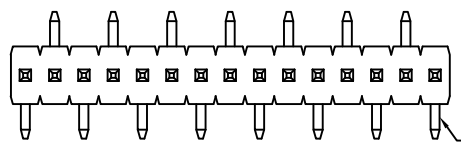
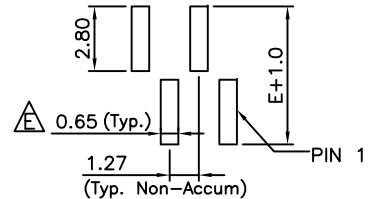
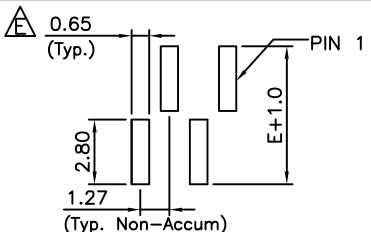


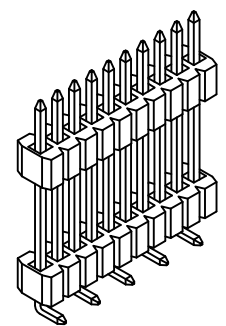
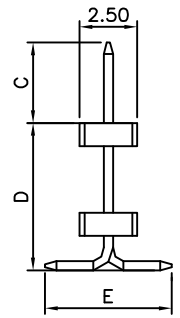
R1 TYPE



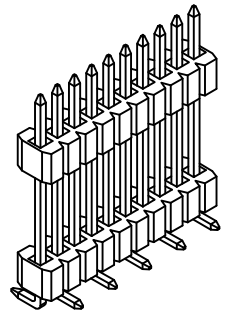
R2 TYPE



RECOMMENDED PCB LAYOUT



R1 TYPE



R2 TYPE

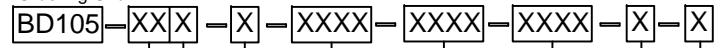
CONTACTS	DIMENSIONS	
	A	B
3	2.54	3.81
4	3.81	5.08
5	5.08	6.35
6	6.35	7.62
7	7.62	8.89
8	8.89	10.16
9	10.16	11.43
10	11.43	12.70
11	12.70	13.97
12	13.97	15.24
13	15.24	16.51
14	16.51	17.78
15	17.78	19.05
16	19.05	20.32
17	20.32	21.59
18	21.59	22.86
19	22.86	24.13
20	24.13	25.40
21	25.40	26.67
22	26.67	27.94
23	27.94	29.21
24	29.21	30.48
25	30.48	31.75
26	31.75	33.02
27	33.02	34.29
28	34.29	35.56
29	35.56	36.83
30	36.83	38.10
31	38.10	39.37
32	39.37	40.64
33	40.64	41.91

SPECIFICATIONS 规格:

CURRENT RATING 电流额定值: 1 AMP
 INSULATOR RESISTANCE 绝缘电阻值: 1000 MEGOHMS MIN.
 DIELECTRIC WITHSTANDING 耐电压: AC 300 V
 CONTACT RESISTANCE 接触电阻值: 20mΩ Max.
 OPERATING TEMPERATURE 工作温度: -40°C TO +105°C
 CONTACT MATERIAL 端子物料: COPPER ALLOY
 INSULATOR MATERIAL 绝缘体物料:
 STANDARD 标准物料: POLYESTER 聚酯, LCP, UL 94-V0
 OPTIONS 可选物料: POLYAMIDE 聚酰胺, NYLON 6T, UL 94-V0
 SOLDERING PROCESS 可焊性:
 LCP (STANDARD 标准物料) -
 IR REFLOW 回流焊: 260°C for 10 sec. Δ
 WAVE 波峰焊: 250°C for 5-10 sec
 MANUAL SOLDER 人工焊接: 350°C for 3-5 sec Δ
 NYLON 6T (OPTION 可选物料) -
 IR REFLOW 回流焊: 260°C for 10 sec.
 WAVE 波峰焊: 230°C for 5-10 sec.
 MANUAL SOLDER 人工焊接: 350°C for 3-5sec
 MATES WITH 配套之母座 (SUBJECT TO PIN LENGTH 在端子长度适合的条件下):
 BD074 BD075 BD080 BD090

By	LYH	PN	CB	AE	AE
DETAIL	DRAWING RELEASE	STANDARD INSULATOR MATERIAL & PACKING OPTIONS CHANGED	PACKING OPTIONS CHANGED	SOLDER TEMP & MATES WITH INFO. UPDATED	DIMENSION AMMENDED
REV	A	B	C	D	E
DATE	28/12/07	27/04/09	20/05/09	27/07/09	27/08/09

Ordering Grid



No. of Contacts: 03 to 33
 Contact Plating:
 A = Gold Flash All Over
 B = Selective Gold Flash Contact Area/ Tin On Tail
 C = Tin All Over
 G = 10μ" Gold Contact Area/Tin On Tail
 I = 30μ" Gold Contact Area/Tin On Tail
Standard = Gold Flash All Over
 Type:
 1 = R1 Type
 2 = R2 Type
 Dimension C (1/100mm) (Post Height)
Standard - 3.00mm = 0300
 or specify Dimension C
 e.g. 2.50mm = 0250
 Tol +/- 0.2mm
 Dimension D (1/100mm) (Stack Height)
Standard - 4.60mm = 0460
 Please Specify Dimension D
 e.g. 2.5mm = 0250
 Tol +/- 0.2mm
 Dimension E (1/100mm) (Footprint Width)
Standard - 4.50mm = 0450
 or specify Dimension E
 e.g. 2.50mm = 0250
 Tol +/- 0.2mm
 REQUEST SAMPLES AND QUOTATION
 Packing Options Δ Δ
B = Tape and Reel with Cap (Standard)
 D = Tube (Standard - where height exceeds 25mm)
 E = Tube with Cap
 Insulator Material Δ
L = LCP (Standard)
 N = Nylon 6T



Tolerances (Except as noted)		Part Number:-	Date:-
Dimensions in mm		BD105	28 DEC 07
X. ± 0.30	X. °±5°	Description:-	
X.X ± 0.20	XX°±2°	1.27mm PITCH ELEVATED PIN HEADER, SINGLE ROW, SURFACE MOUNT, VERTICAL	
X.XX ± 0.15	XX°±1°	THIS DRAWING IS CONFIDENTIAL AND MUST NOT BE COPIED OR DISCLOSED WITHOUT WRITTEN CONSENT	
X.XXX ± 0.10	XXX°±0.5°	Third Angle Projection	



www.globalconnectortechology.com

Scale	Revision	Material	Drawn by	Sheet No.
NTS	E	See Note	LYH	E & OE
				1/1