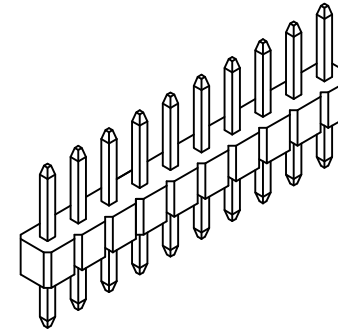
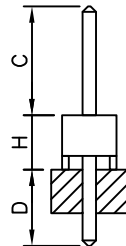
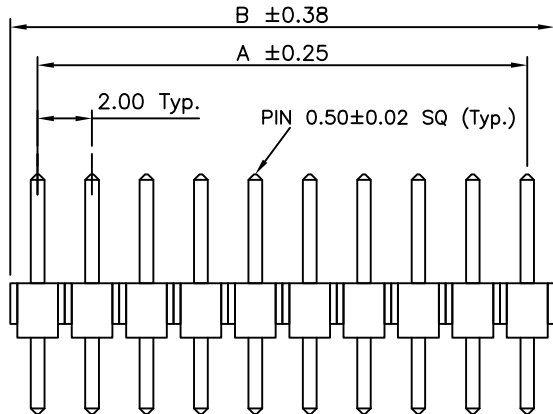


RECOMMENDED PCB LAYOUT



CONTACTS	DIMENSIONS	
	A	B
2	2.0	4.0
3	4.0	6.0
4	6.0	8.0
5	8.0	10.0
6	10.0	12.0
7	12.0	14.0
8	14.0	16.0
9	16.0	18.0
10	18.0	20.0
11	20.0	22.0
12	22.0	24.0
13	24.0	26.0
14	26.0	28.0
15	28.0	30.0
16	30.0	32.0
17	32.0	34.0
18	34.0	36.0
19	36.0	38.0
20	38.0	40.0
21	40.0	42.0
22	42.0	44.0
23	44.0	46.0
24	46.0	48.0
25	48.0	50.0
26	50.0	52.0
27	52.0	54.0
28	54.0	56.0
29	56.0	58.0
30	58.0	60.0
31	60.0	62.0
32	62.0	64.0
33	64.0	66.0
34	66.0	68.0
35	68.0	70.0
36	70.0	72.0
37	72.0	74.0
38	74.0	76.0
39	76.0	78.0
40	78.0	80.0

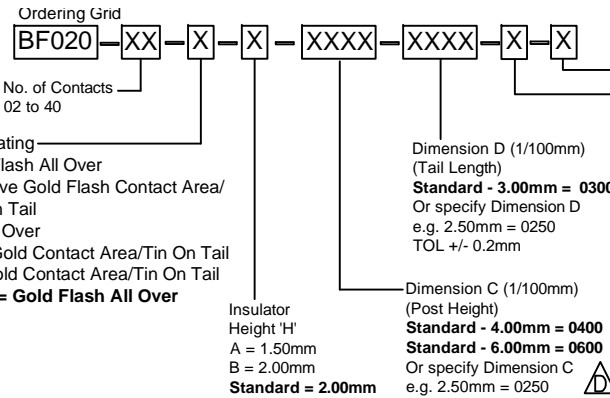
**FEATURES 特点**  
 EASILY BREAKABLE NOTCHES 易折断缺口  
 CUSTOM PIN LENGTH 可定制PIN长度  
 STANDOFFS FACILITATE POST SOLDER CLEANING 支脚设计易于清洁定位焊接点

**SPECIFICATIONS 规格**  
 CURRENT RATING 电流额定值: 2 AMP  
 INSULATOR RESISTANCE 绝缘电阻值: 1000 MEGOHMS MIN.  
 CONTACT RESISTANCE 接触电阻值: 20mOHMS MAX.  
 DIELECTRIC WITHSTANDING 耐电压: AC 500 V  
 OPERATING TEMPERATURE 工作温度: -40°C TO +105°C  
 CONTACT MATERIAL 端子物料: COPPER ALLOY  
 INSULATOR MATERIAL 绝缘体物料:  
 STANDARD 标准物料: POLYAMIDE 聚酰胺, NYLON 6T, UL 94-V0  
 OPTIONS 可选物料: POLYESTER 聚酯, LCP, UL 94-V0  
 OR POLYESTER 聚酯, PBT, UL94-V0  
 SOLDERING PROCESS 可焊性:  
 NYLON 6T (STANDARD 标准物料) -  
 IR REFLOW 回流焊: 260°C for 10 sec.  
 WAVE 波峰焊: 230°C for 5-10 sec.  
 MANUAL SOLDER 人工焊接: 350°C for 3-5 sec

PBT (OPTION 可选物料) - MANUAL SOLDER 人工焊接: 330°C for 3-5 sec.  
 (NOT SUITABLE FOR HI-TEMP PROCESS 不适合高温处理)  
 LCP (OPTION 可选物料) -  
 IR REFLOW 回流焊: 260°C for 10 sec. **△**  
 WAVE 波峰焊: 250°C for 5-10 sec.  
 MANUAL SOLDER 人工焊接: 350°C for 3-5 sec **△**

MATES WITH 配套之母座 (SUBJECT TO PIN LENGTH 在端子长度适合的条件下):  
 BF070 BF085 BF086 BF090 BF091

By	LYH	CB	DR	SA
DETAIL	DRAWING RELEASE	PACKING OPTIONS CHANGED	CHANGE TO SOLDER TEMP. INFORMATION	AMENDMENT TO STANDARD DIMENSIONS
REV DATE	A 25/10/07	B 27/04/09	C 30/07/09	D 08/12/09



**Packing Options**  
**G = Plastic Box (Standard)**  
 D = Tube  
 E = Tube with Cap

**Insulator Material**  
**N = Nylon 6T (Standard)**  
 P = PBT  
 L = LCP

**REQUEST SAMPLES AND QUOTATION**

Tolerances (Except as noted)		Part Number:-	Date:-
Dimensions in mm		BF020	25 OCT 07
X. ± 0.30	X.* ± 5°	Description:- 2.0mm PITCH PIN HEADER, SINGLE ROW, THROUGH HOLE, VERTICAL	
X.X ± 0.20	X.* ± 2°		
X.XX ± 0.15	XX* ± 1°		
X.XXX ± 0.10	XXX* ± 0.5°		
Third Angle Projection		THIS DRAWING IS CONFIDENTIAL AND MUST NOT BE COPIED OR DISCLOSED WITHOUT WRITTEN CONSENT	



**GCT**

www.globalconnectortechology.com

Scale NTS	Revision D	Material See Note	Drawn by LYH	Sheet No. E & OE 1/1
-----------	------------	-------------------	--------------	----------------------