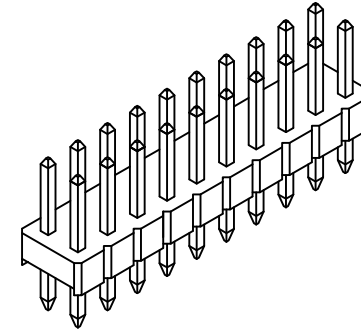
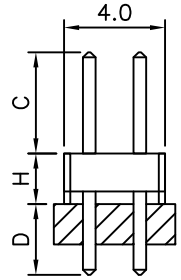
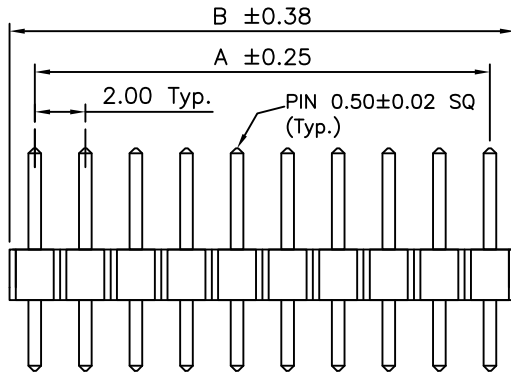


RECOMMENDED PCB LAYOUT



CONTACTS	DIMENSIONS	
	A	B
4	2.0	4.0
6	4.0	6.0
8	6.0	8.0
10	8.0	10.0
12	10.0	12.0
14	12.0	14.0
16	14.0	16.0
18	16.0	18.0
20	18.0	20.0
22	20.0	22.0
24	22.0	24.0
26	24.0	26.0
28	26.0	28.0
30	28.0	30.0
32	30.0	32.0
34	32.0	34.0
36	34.0	36.0
38	36.0	38.0
40	38.0	40.0
42	40.0	42.0
44	42.0	44.0
46	44.0	46.0
48	46.0	48.0
50	48.0	50.0
52	50.0	52.0
54	52.0	54.0
56	54.0	56.0
58	56.0	58.0
60	58.0	60.0
62	60.0	62.0
64	62.0	64.0
66	64.0	66.0
68	66.0	68.0
70	68.0	70.0
72	70.0	72.0
74	72.0	74.0
76	74.0	76.0
78	76.0	78.0
80	78.0	80.0



FEATURES 特点
 EASILY BREAKABLE NOTCHES 易折断驳口
 CUSTOM PIN LENGTH.
 STANDOFFS FACILITATE POST SOLDER CLEANING.
 支脚设计易于清洁定位焊接点

SPECIFICATIONS 规格
 CURRENT RATING 电流额定值: 2 AMP
 INSULATOR RESISTANCE 绝缘电阻值: 1000 MEGOHMS MIN.
 CONTACT RESISTANCE 接触电阻值: 20 mOHMS MAX.
 DIELECTRIC WITHSTANDING 耐电压: AC 500 V
 OPERATING TEMPERATURE 工作温度: -40°C TO +105°C
 CONTACT MATERIAL 端子物料: COPPER ALLOY
 INSULATOR MATERIAL 绝缘体物料:
 STANDARD 标准物料: POLYAMIDE 聚酰胺, NYLON 6T, UL 94-V0
 OPTIONS 可选物料: POLYESTER 聚酯, LCP, UL 94-V0
 OR POLYESTER 聚酯, PBT, UL94-V0
SOLDERING PROCESS 可焊性:
 NYLON 6T (STANDARD 标准物料) -
 IR REFLOW 回流焊: 260°C for 10 sec.
 WAVE 波峰焊: 230°C for 5-10 sec.
 MANUAL SOLDER 人工焊接: 350°C for 3-5 sec
 PBT (OPTION 可选物料) - MANUAL SOLDER 人工焊接: 330°C for 3-5 sec.
 (NOT SUITABLE FOR HI-TEMP PROCESS 不适合高温处理)
 LCP (OPTION 可选物料) -
 IR REFLOW 回流焊: 260°C for 10 sec. **▲**
 WAVE 波峰焊: 250°C for 5-10 sec.
 MANUAL SOLDER 人工焊接: 350°C for 3-5 sec **▲**
MATES WITH 配套之母座 (SUBJECT TO PIN LENGTH 在端子长度适合的条件下):
 BF065 BF075 BF080 BF095 BF100
 BF105 BF115 BF120

Ordering Grid

BF050-XX-X-X-XXXX-XXXX-X-X

No. of Contacts 04 to 80

Contact Plating
 A = Gold Flash All Over
 B = Selective Gold Flash Contact Area/
 Tin On Tail
 C = Tin All Over
 G = 10µ" Gold Contact Area/Tin On Tail
 I = 30µ" Gold Contact Area/Tin On Tail
Standard = Gold Flash All Over

Insulator Height 'H'
 A = 1.50mm
 B = 2.00mm
Standard = 2.00mm

Dimension C (1/100mm) (Post Height)
Standard - 4.00mm = 0400
Standard - 6.00mm = 0600
 Or specify Dimension C
 e.g. 2.50mm = 0250 **▲**
 TOL +/- 0.2mm **▲**

Packing Options **▲**
 G = Plastic Box (Standard)
 D = Tube
 E = Tube with Cap

Insulator Material **▲**
N = Nylon 6T (Standard)
 L = LCP
 P = PBT

Dimension D (1/100mm) (Tail Length)
Standard - 3.00mm = 0300
 Or specify Dimension D
 e.g. 2.50mm = 0250
 TOL +/- 0.2mm

REQUEST SAMPLES AND QUOTATION

By	LYH	CB	AE	DR	SA
DETAIL	DRAWING RELEASE	PACKING OPTIONS CHANGED	CORRECTION TO ORDERING GRID	CHANGE TO SOLDER TEMP. INFORMATION	AMENDMENT TO STANDARD DIMENSIONS
REV DATE	A 31/10/07	B 27/04/09	C 03/06/09	D 30/07/09	E 08/12/09



Tolerances (Except as noted)	Part Number:-	Date:-
Dimensions in mm	BF050	31 OCT 07
X. ± 0.30 X.* ± 5°	Description:-	
X.X ± 0.20 X.* ± 2°	2.0mm PITCH PIN HEADER, DUAL ROW, THROUGH HOLE, VERTICAL	
X.XX ± 0.15 .XX* ± 1°		
X.XXX ± 0.10 .XXX* ± 0.5°		
Third Angle Projection	© THIS DRAWING IS CONFIDENTIAL AND MUST NOT BE COPIED OR DISCLOSED WITHOUT WRITTEN CONSENT	

Scale	Revision	Material	Drawn by	Sheet No.
NTS	E	See Note	LYH	E & OE 1/1

GCT

www.globalconnectortechology.com