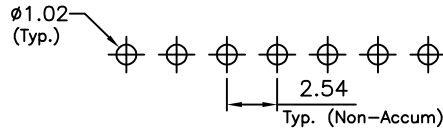
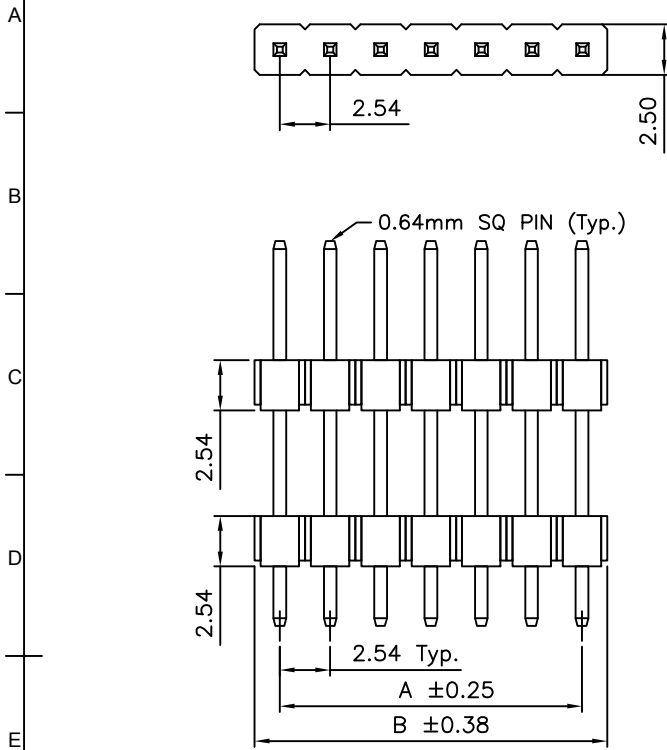
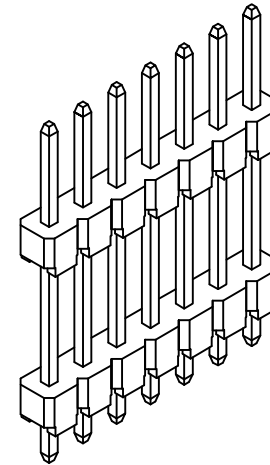
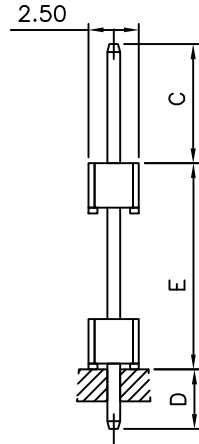


Global Connector Technology Ltd. - BG020: 2.54mm PITCH ELEVATED PIN HEADER, SINGLE ROW, THROUGH-HOLE, VERTICAL



RECOMMENDED PCB LAYOUT



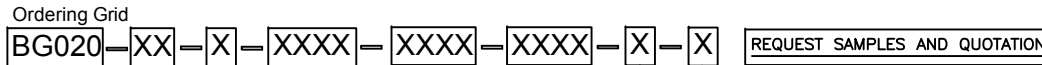
| CONTACTS | DIMENSIONS | |
|----------|------------|--------|
| | A | B |
| 2 | 2.54 | 5.08 |
| 3 | 5.08 | 7.62 |
| 4 | 7.62 | 10.16 |
| 5 | 10.16 | 12.70 |
| 6 | 12.70 | 15.24 |
| 7 | 15.24 | 17.78 |
| 8 | 17.78 | 20.32 |
| 9 | 20.32 | 22.86 |
| 10 | 22.86 | 25.40 |
| 11 | 25.40 | 27.94 |
| 12 | 27.94 | 30.48 |
| 13 | 30.48 | 33.02 |
| 14 | 33.02 | 35.56 |
| 15 | 35.56 | 38.10 |
| 16 | 38.10 | 40.64 |
| 17 | 40.64 | 43.18 |
| 18 | 43.18 | 45.72 |
| 19 | 45.72 | 48.26 |
| 20 | 48.26 | 50.80 |
| 21 | 50.80 | 53.34 |
| 22 | 53.34 | 55.88 |
| 23 | 55.88 | 58.42 |
| 24 | 58.42 | 60.96 |
| 25 | 60.96 | 63.50 |
| 26 | 63.50 | 66.04 |
| 27 | 66.04 | 68.58 |
| 28 | 68.58 | 71.12 |
| 29 | 71.12 | 73.66 |
| 30 | 73.66 | 76.20 |
| 31 | 76.20 | 78.74 |
| 32 | 78.74 | 81.28 |
| 33 | 81.28 | 83.82 |
| 34 | 83.82 | 86.36 |
| 35 | 86.36 | 88.90 |
| 36 | 88.90 | 91.44 |
| 37 | 91.44 | 93.98 |
| 38 | 93.98 | 96.52 |
| 39 | 96.52 | 99.06 |
| 40 | 99.06 | 101.60 |

SPECIFICATIONS 规格
 CURRENT RATING 电流额定值: 3 AMP
 INSULATOR RESISTANCE 绝缘电阻值: 1000 MΩ Min.
 CONTACT RESISTANCE 接触电阻值: 20mΩ Max.
 DIELECTRIC WITHSTANDING 耐电压: AC 600 V
 OPERATING TEMPERATURE 工作温度: -40°C TO +105°C
 CONTACT MATERIAL 端子物料: COPPER ALLOY
 INSULATOR MATERIAL 绝缘体物料:

STANDARD 标准物料: POLYAMIDE 聚酰胺, NYLON 6T, UL 94-V0
 OPTIONS 可选物料: POLYESTER 聚酯, LCP, UL 94-V0
 OR POLYESTER 聚酯, PBT, UL94-V0

SOLDERING PROCESS 可焊性:
 NYLON 6T (STANDARD 标准物料) -
 IR REFLOW 回流焊: 260°C for 10 sec.
 WAVE 波峰焊: 230°C for 5-10 sec.
 MANUAL SOLDER 人工焊接: 350°C for 3-5 sec
 PBT (OPTION 可选物料) - MANUAL SOLDER 人工焊接: 330°C for 3-5 sec.
 (NOT SUITABLE FOR HI-TEMP PROCESS 不适合高温处理)
 LCP (OPTION 可选物料) -
 IR REFLOW 回流焊: 260°C for 10 sec.
 WAVE 波峰焊: 250°C for 5-10 sec.
 MANUAL SOLDER 人工焊接: 350°C for 3-5 sec

MATES WITH 配套之母座 (SUBJECT TO PIN LENGTH 在端子长度适合的条件下):
 BG090 BG095 BG096 BG100 BG110
 BG115 BG125 BG130 BG135 BG145
 BG205



No. of Contacts
02 to 40

Contact Plating
 A = Gold Flash All Over
 B = Selective Gold Flash Contact Area/
 Tin On Tail
 C = Tin All Over
 G = 10µ" Gold Contact Area/Tin On Tail
 I = 30µ" Gold Contact Area/Tin On Tail
Standard = Gold Flash All Over

Insulator Material
 N = Nylon 6T (Standard)
 P = PBT
 L = LCP

Packing Options
 G = Plastic Box (Standard)
 D = Tube
 E = Tube with Cap

Dimension D (1/100mm)
 (Tail Length)
Standard - 3.00mm = 0300
 Or specify Dimension D
 e.g. 2.50mm = 0250
 TOL.: ±0.2mm

Dimension C (1/100mm)
 (Post Height)
Standard - 6.40mm = 0640
 Or specify Dimension C
 e.g. 2.50mm = 0250
 TOL.: ±0.2mm

Dimension E (1/100mm)
 (Stack Height)
Standard - 10.40mm = 1040
 Or specify Dimension E
 e.g. 5.08mm = 0508 (minimum)
 TOL.: ±0.2mm

Note:
 If lower stacking heights required
 contact GCT for lower profile
 insulator options

| By | LYH | PN | CB | DR | SA |
|----------|-----------------|-------------------------------------|-------------------------|------------------------------------|----------------------------------|
| DETAIL | DRAWING RELEASE | STANDARD INSULATOR MATERIAL CHANGED | PACKING OPTIONS CHANGED | CHANGE TO SOLDER TEMP. INFORMATION | MINIMUM DIMENSION ADDED TO DIM E |
| REV DATE | A 30/10/06 | B 12/03/09 | C 27/04/09 | D 05/08/09 | E 26/04/10 |



| Tolerances (Except as noted) | | Part Number:- | Date:- |
|------------------------------|-------------|--|-----------|
| Dimensions in mm | | BG020 | 30 OCT 06 |
| X. ± 0.30 | X.° ± 5° | Description:- | |
| XX ± 0.20 | XX° ± 2° | 2.54mm PITCH ELEVATED PIN HEADER, SINGLE ROW, THROUGH-HOLE, VERTICAL | |
| XXX ± 0.15 | XXX° ± 1° | © THIS DRAWING IS CONFIDENTIAL AND MUST NOT BE COPIED OR DISCLOSED WITHOUT WRITTEN CONSENT | |
| X.XXX ± 0.10 | XXX° ± 0.5° | Third Angle Projection | |

| Scale | Revision | Material | Drawn by | Sheet No. |
|-------|----------|----------|----------|------------|
| NTS | E | See Note | LYH | E & OE 1/1 |

GCT

www.globalconnectortechology.com