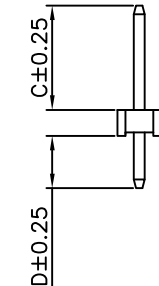
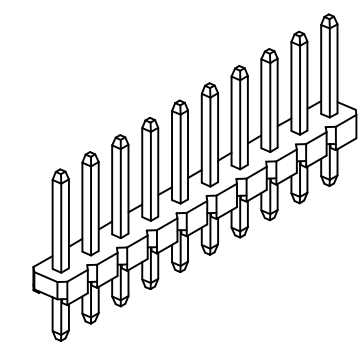
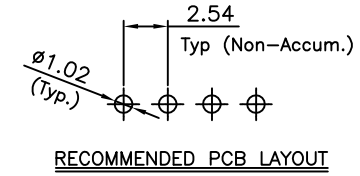
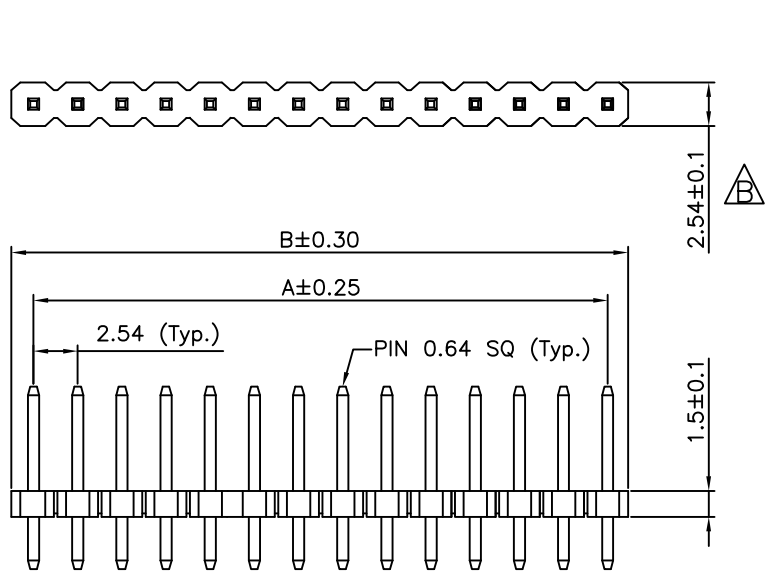
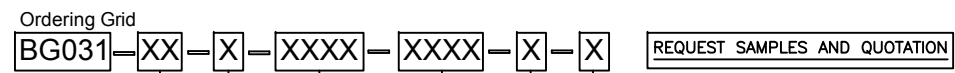


A
B
C
D
E
F
G
H



CONTACTS	DIMENSIONS	
	A	B
02	2.54	5.08
03	5.08	7.62
04	7.62	10.16
05	10.16	12.70
06	12.70	15.24
07	15.24	17.78
08	17.78	20.32
09	20.32	22.86
10	22.86	25.40
11	25.40	27.94
12	27.94	30.48
13	30.48	33.02
14	33.02	35.56
15	35.56	38.10
16	38.10	40.64
17	40.64	43.18
18	43.18	45.72
19	45.72	48.26
20	48.26	50.80
21	50.80	53.34
22	53.34	55.88
23	55.88	58.42
24	58.42	60.96
25	60.96	63.50
26	63.50	66.04
27	66.04	68.58
28	68.58	71.12
29	71.12	73.66
30	73.66	76.20
31	76.20	78.74
32	78.74	81.28
33	81.28	83.82
34	83.82	86.36
35	86.36	88.90
36	88.90	91.44
37	91.44	93.98
38	93.98	96.52
39	96.52	99.06
40	99.06	101.6

SPECIFICATIONS 规格
 CURRENT RATING 电流额定值: 3 AMP
 INSULATOR RESISTANCE 绝缘电阻值: 1000 MΩ Min.
 CONTACT RESISTANCE 接触电阻值: 20mΩ Max.
 DIELECTRIC WITHSTANDING 耐电压: AC 600 V
 OPERATING TEMPERATURE 工作温度: -40°C TO +105°C
 CONTACT MATERIAL 端子物料: COPPER ALLOY
 INSULATOR MATERIAL 绝缘体物料:
 STANDARD 标准物料: POLYAMIDE 聚酰胺, NYLON 6T, UL 94-V0
 OPTIONS 可选物料: POLYESTER 聚酯, LCP, UL 94-V0
 SOLDERING PROCESS 可焊性:
 NYLON 6T (STANDARD 标准物料) -
 IR REFLOW 回流焊: 260°C for 10 sec.
 WAVE 波峰焊: 230°C for 5-10 sec.
 MANUAL SOLDER 人工焊接: 350°C for 3-5 sec
 LCP (OPTION 可选物料) -
 IR REFLOW 回流焊: 260°C for 10 sec.
 WAVE 波峰焊: 250°C for 5-10 sec.
 MANUAL SOLDER 人工焊接: 350°C for 3-5 sec
 MATES WITH 配套之母座 (SUBJECT TO PIN LENGTH 在端子长度适合的条件下):
 BG090 BG095 BG096 BG100 BG110
 BG115 BG125 BG126 BG130 BG135
 BG145 BG205 BG230



No. of Contacts 02 to 40

A = Gold Flash All Over
 B = Selective Gold Flash Contact Area/
 Tin On Tail
 C = Tin All Over
 G = 10μ" Gold Contact Area/Tin On Tail
 I = 30μ" Gold Contact Area/Tin On Tail
Standard = Gold Flash All Over

Insulator Material
N = Nylon 6T (Standard)
 L = LCP

Dimension C (1/100mm)
 (Post Height)
Standard - 6.00mm = 0600
 Or specify Dimension C
 e.g. 2.50mm = 0250
 TOL.: ±0.2mm

Dimension D (1/100mm)
 (Tail Length)
Standard - 3.00mm = 0300
 Or specify Dimension D
 e.g. 2.50mm = 0250
 TOL.: ±0.2mm

Packing Options
G = Plastic Box (Standard)
 D = Tube
 E = Tube with Cap

By	BC	AE
DETAIL	DRAWING RELEASE	CHANGE TO DIMENSION
REV DATE	A 13/04/07	B 24/08/09



Tolerances (Except as noted)	Part Number:-	Date:-
Dimensions in mm	BG031	13 APR 07
X. ± 0.30	X. ± 5°	
X.X ± 0.20	X' ± 2°	
X.XX ± 0.15	XX' ± 1°	
X.XXX ± 0.10	XXX' ± 0.5°	
Third Angle Projection	Description:- 2.54mm PITCH PIN HEADER, SINGLE ROW, THROUGH HOLE, VERTICAL, LOW PROFILE	
© THIS DRAWING IS CONFIDENTIAL AND MUST NOT BE COPIED OR DISCLOSED WITHOUT WRITTEN CONSENT		

Global Connector Technology

www.globalconnectortech.com

Scale NTS	Revision B	Material See Note	Drawn by BC	E & OE	Sheet No. 1/1
-----------	------------	-------------------	-------------	--------	---------------